

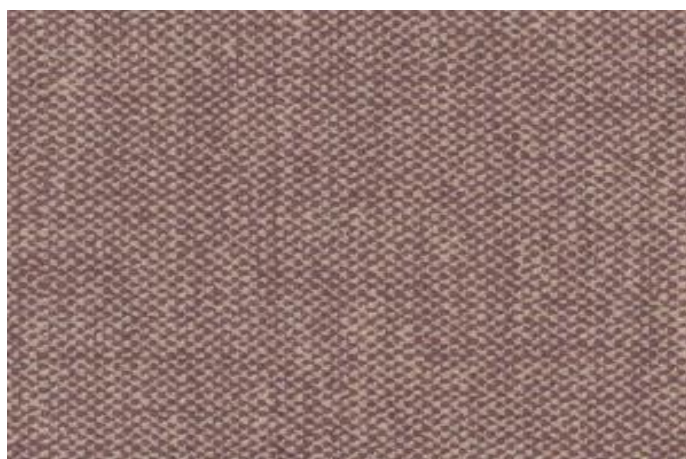
CS Soft Duo 5.7 - 571154



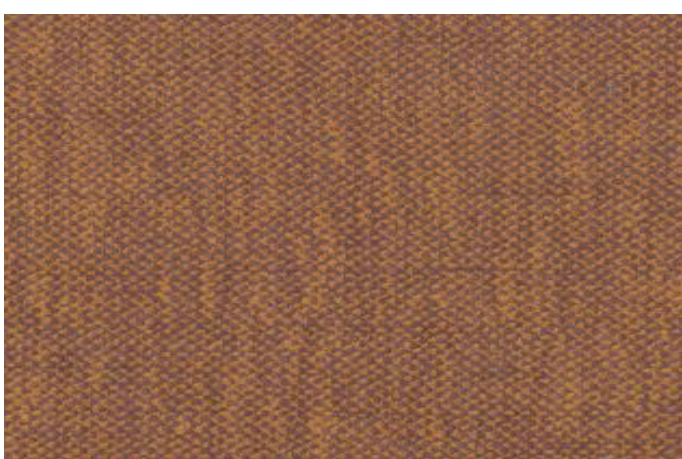
CS Soft Duo 5.7 571154 - 10



CS Soft Duo 5.7 571154 - 14



CS Soft Duo 5.7 571154 - 19



CS Soft Duo 5.7 571154 - 20



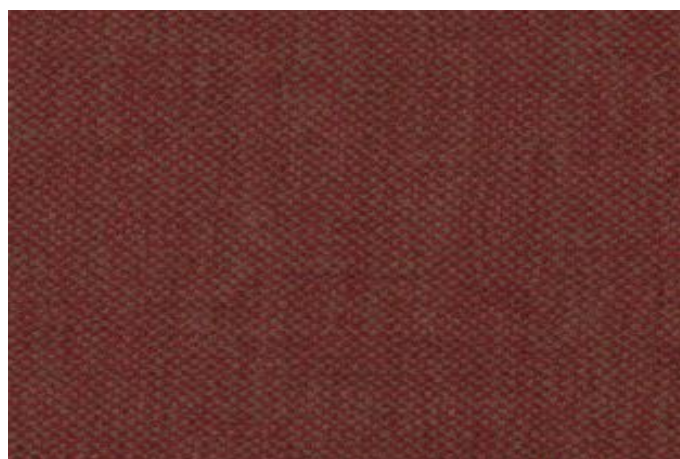
CS Soft Duo 5.7 571154 - 21



CS Soft Duo 5.7 571154 - 25



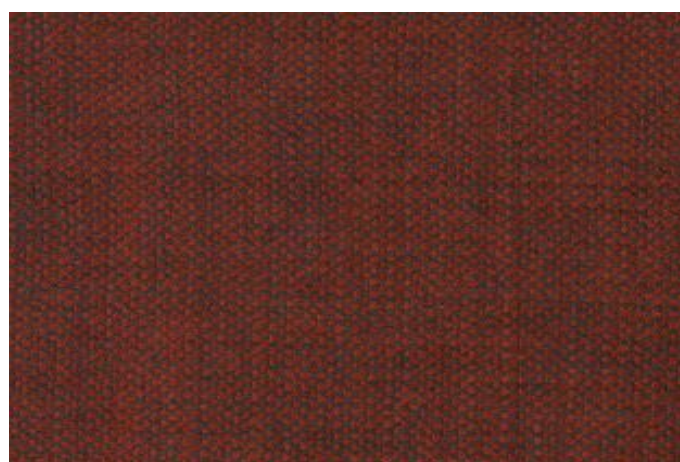
CS Soft Duo 5.7 571154 - 30



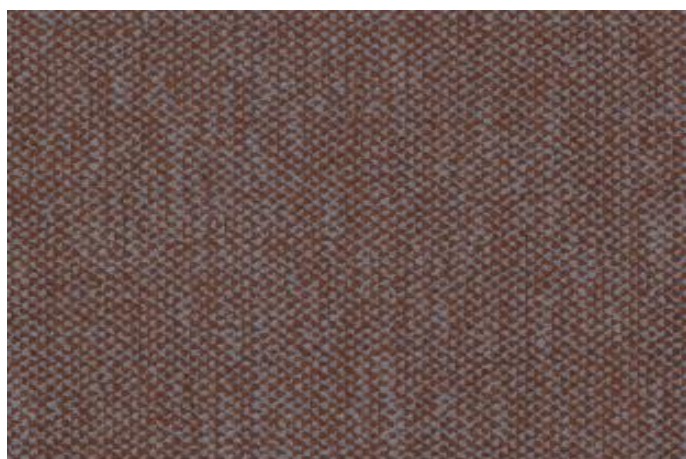
CS Soft Duo 5.7 571154 - 31



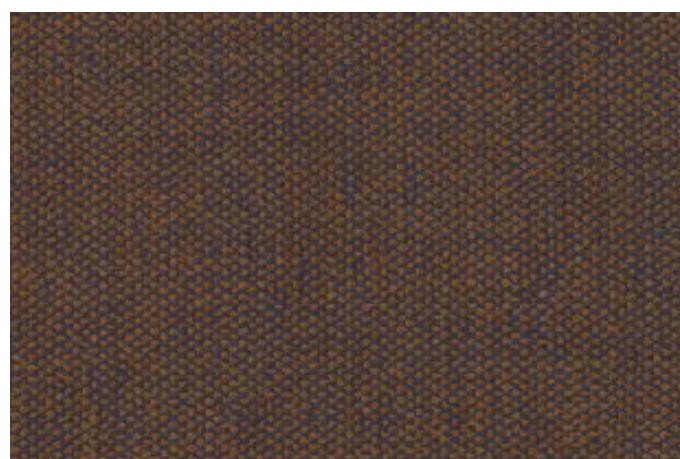
CS Soft Duo 5.7 571154 - 32



CS Soft Duo 5.7 571154 - 33



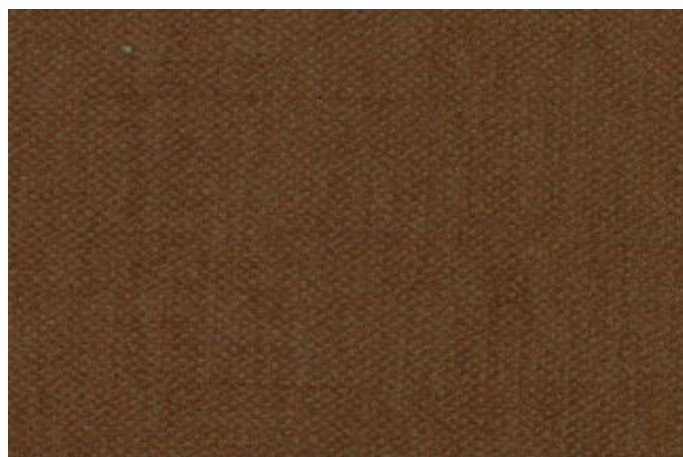
CS Soft Duo 5.7 571154 - 40



CS Soft Duo 5.7 571154 - 41



CS Soft Duo 5.7 571154 - 42



CS Soft Duo 5.7 571154 - 43



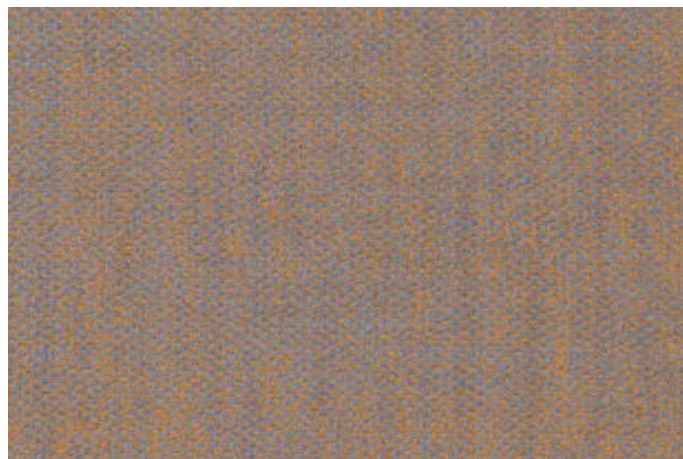
CS Soft Duo 5.7 571154 - 44



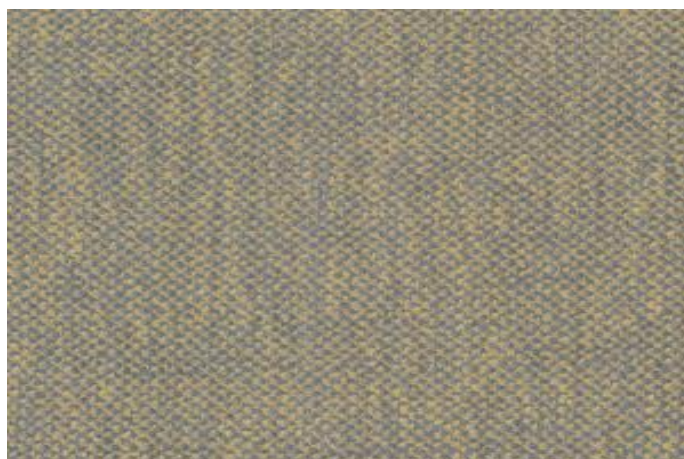
CS Soft Duo 5.7 571154 - 47



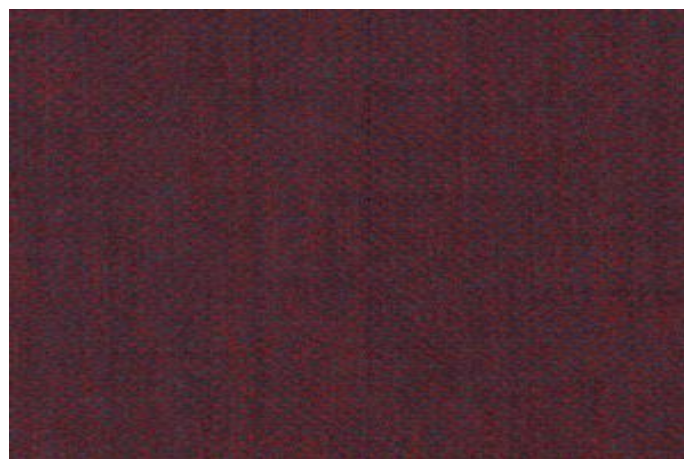
CS Soft Duo 5.7 571154 - 50



CS Soft Duo 5.7 571154 - 60



CS Soft Duo 5.7 571154 - 61



CS Soft Duo 5.7 571154 - 62



CS Soft Duo 5.7 571154 - 63



CS Soft Duo 5.7 571154 - 64



CS Soft Duo 5.7 571154 - 65



CS Soft Duo 5.7 571154 - 70



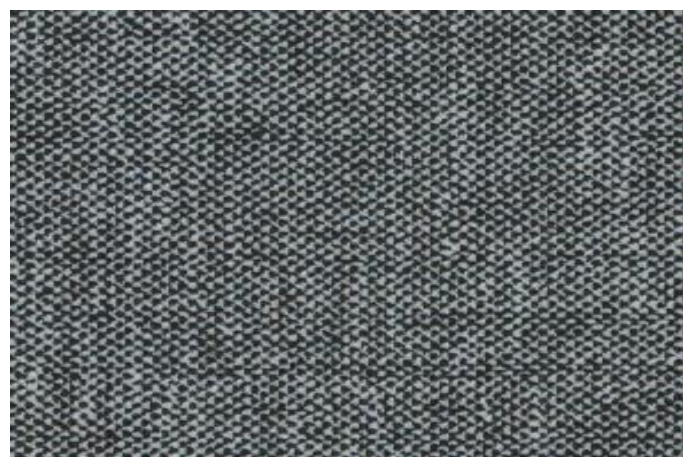
CS Soft Duo 5.7 571154 - 71



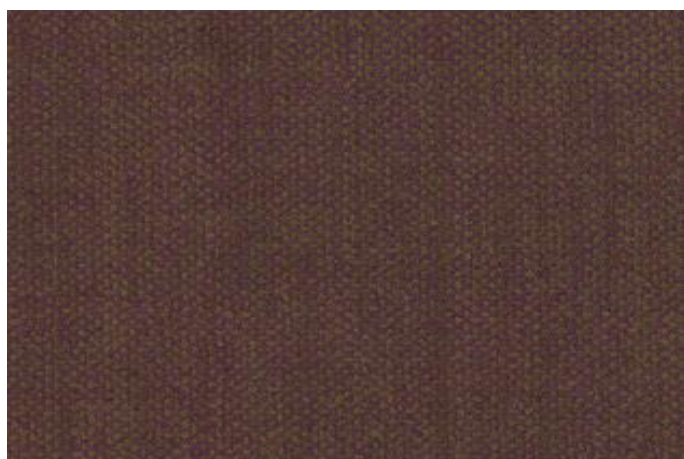
CS Soft Duo 5.7 571154 - 75



CS Soft Duo 5.7 571154 - 76



CS Soft Duo 5.7 571154 - 77








CS Soft Duo 5.7 571154 - 90



CS Soft Duo 5.7 571154 - 97

Artikel: **CS SOFT DUO 5.7**
 Dessin: **571154**
 Material: 100% PES
 TREVIRA CS
 Breite: ca. 140 cm
 Gewicht: ca. 486 g/m²
 Rapport: uni



Scheuertouren	DIN EN 14465 Martindale		80.000 Touren
Pilling	DIN EN ISO 12945-2		Note 4-5
Reibechtheit	DIN EN ISO 105-X12	nass trocken	Note 3-4 Note 4
Lichtechtheit (Blaumaßstab)	DIN EN ISO 105-B02		Note 5-6
Weiterreißfestigkeit - Flügel	DIN EN ISO 13937-3	Kettrichtung Schussrichtung	44 N 45 N
Zugfestigkeit	DIN EN ISO 13934-1	Kettrichtung Schussrichtung	630,84 N 654,76 N
Nahtschiebewiderstand	DIN EN ISO 13936-2	Kettrichtung Schussrichtung	3,4 mm 3,6 mm
Akustikklasse Akustikwert α_w :	ISO 11654		Note C 0,75
Luftdurchlässigkeit	DIN EN ISO 9237		129,93 mm/Sek.
Lösemittlechtheit	DIN EN ISO 105-X05	Petroleum / Waschbenzin Per- / Tetrachlorethylen	Note 4-5 Note 4-5
Brandklasse B1	DIN 4102-1		bestanden
Brandklasse M1			bestanden
Brandklasse UNI VF9175			bestanden
IMO 0493 2022	U.S.C.G. 164.111/EC0493 U.S.C.G. 164.144/EC0493 U.S.C.G. 164.142/EC0493	Part-7 Part-8 Part-9	Deko Möbel Bettüberwurf
Reinigungsempfehlung	    		
Legende Textilkennzeichnung	PES Polyester		